



REPORT

05/2026

BAMAG

Neugasse 43
CH-9000 St. Gallen

+41 (0)71-222 2061
info@bamtec.com

 **BAMTEC**[®]
Reinforcement Technology



www.bamtec.com

WEYLAND Austria
BAMTEC[®] Wall
BAMTEC[®] NEWS
BAMTEC[®] Consult

Industrial floor slabs
Wall solution is gaining ground
Participation in trade fairs
Service for construction companies



INDUSTRIAL FLOOR SLABS IN ENCLOSED HALLS

Simply and quickly reinforced with **BAMTEC®** reinforcement technology



The Weyland Group, with around 610 employees across Europe and a turnover of approximately €500 million, has been a **BAMTEC®** partner since 2018. During the construction of the new reinforcement fabrication facility in Taufkirchen an der Pram, Austria, it was clear from the outset that **BAMTEC®** would be used as reinforcement for the industrial floor. Planning, production, and installation of **BAMTEC®** were, of course, carried out by the subsidiary Ferrochema GmbH, Spittal an der Drau.

Optimal logistics and working environment

At the new site, state-of-the-art and highly impressive halls with an area of over 10,000 m² were built. An adjoining office building made of timber construction now serves as a workplace for the employees. According to Managing Director Otto Weyland Jr., it has been possible to create an optimal and modern working environment for current and future employees. The new site will meet the requirements of a successful steel trading business for the next 50 years.

Prefabrication solutions and standard products

Manfred Eder, Head of Reinforcing Steel: "As a leading wholesaler of reinforcing steel, customer-oriented solutions and execution are the foundation of our success. A good example of this is the **BAMTEC®** roll reinforcement solution combined with welded modular reinforcement. The contractor saves construction time and costs. Despite the shortage of skilled workers, on-time execution with top quality is achieved."

Use of BAMTEC® in enclosed halls

A reinforced floor slab is the optimal solution for industrial flooring with high load requirements. As is common today, large sections were planned and defined by expansion joint profiles. The **BAMTEC®** elements, rolled out cleanly in four layers without overlapping multiple splices, are ideal as reinforcement. During unrolling, the reinforcement can be walked on. Installation of the reinforcement was made even faster and easier through the combination with reinforcement modules.

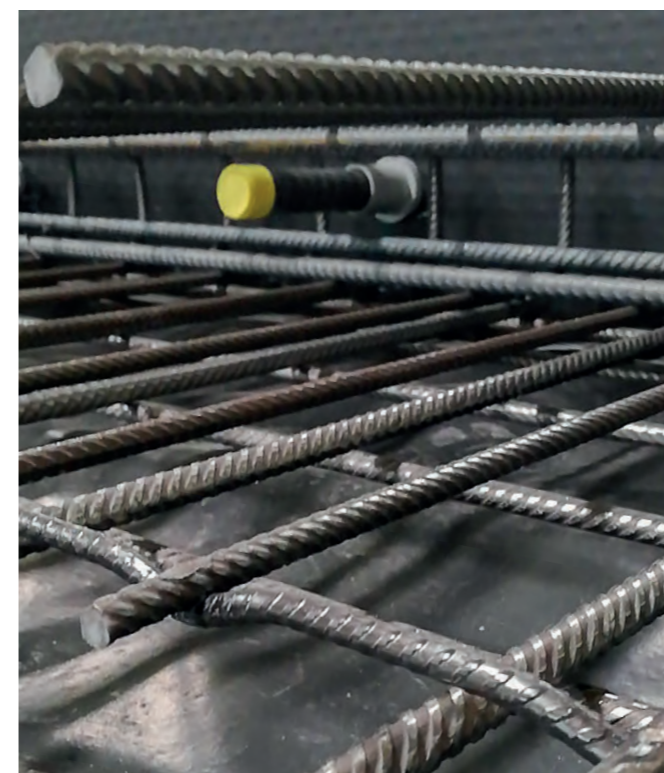
We wish the Weyland Group continued success!



The new **BAMTEC®** Evolution production facility



BAMTEC® Installation



Expansion joint detail



Storage area for standard products



Powerful loading zone



Project Owner: Weyland GmbH, St. Florian am Inn
Contractor: Waizenauer Bauunternehmen GmbH & Co KG, Taufkirchen/Pram
BAMTEC® Partner: Ferrochema GmbH, Spittal an der Drau



THE BAMTEC® WALL SOLUTION IS GAINING GROUND



With BAMTEC® reinforcement technology, floor slabs, slabs, large reinforced concrete walls, and even bridges can now be reinforced easily, quickly, and economically.

Based on the execution of a 200 m long, 15 m high, and 45 cm thick solid reinforced concrete wall with numerous openings and heavy reinforcement, we were able to thoroughly review and further improve the BAMTEC® WALL standard.

Challenges in this project

It became evident that large openings located at the upper edge of wall mats, in combination with very large reinforcing bars of up to 28 mm, are not practical. The placement of large openings in the upper edge area of the mat should therefore be avoided during planning.

In addition, we expanded the installation instructions on the plans and recommended extending the connections between elements for complex cases. The use of tying machines also proved helpful in ensuring consistent quality of wire ties.

Further development of BamCAD

To simplify on-site application and ensure quality, the standard planning in BamCAD was enhanced with an installation view of the wall elements. This makes the positioning of elements relative to each other easier to understand and provides a suggested arrangement of wall hooks.

Conclusion of the execution

„ We actively proposed the use of BAMTEC® to our client in order to execute the large-area and tall wall sections efficiently and safely under the project's high safety requirements. The system enabled us to carry out the work in a much more structured way, with less physical strain and significantly faster. With conventional rebar reinforcement, this would not only have meant considerably more effort, but would very likely have led to significant delays in our execution and thus in the overall project schedule. The results convinced both our client and the project owner, so that additional components were also executed using BAMTEC®. “

Hakan Agirman, Managing Director / Site Manager, AE Eisenflechten GmbH



BAMTEC® WALL application in Switzerland



BAMTEC® NEWS: Participation in trade fairs



WOC World of Concrete in Las Vegas, USA

Our plant partner, AMERICAN PROGRESS GROUP, presents its innovative solutions there. As the manufacturer and developer of BAMTEC® systems, we have the opportunity to participate as a co-exhibitor. Together with our existing partners Bamco US, Texas, and Foundation Construction Automation, Ohio, it is now three times as enjoyable to be present on site.



World of Concrete, Las Vegas

BAUMA – the world's largest construction machinery trade fair, Munich, Germany

The BAUMA in Munich takes place every three years. As a must-attend event for innovative companies with global ambitions, we are always present. Once again, as a co-exhibitor at the impressive booth of the progress Group, featuring exhibitions and live demonstrations of remarkable machinery, we attracted many international visitors. We look forward to welcoming you again in Munich in 2028.



Miles Johnson at the BAUMA

INTERNATIONAL BAMTEC® PARTNER MEETING IN LINDAU, GERMANY

As in every year, our **BAMTEC®** partner network meeting took place again in 2025. This year, more than 100 participants from 16 nations came to Lindau at the Lake Constance. With ample time for exchange and networking, participants enjoyed reconnecting and attending the exciting presentations.

In addition to project reports, such as the use of **BAMTEC®** on the large-scale construction site of the new hospital in Memmingen, Germany, participants received the latest information about the partnership with UNDIOME, the sustainable and economical voided slab system, as well as compelling installation performance data for **BAMTEC®** reinforcement solutions determined by OCU-LAI using AI cameras.

Another highlight was the trip on the Art Nouveau steamship Hohentwiel, where, in excellent weather, we celebrated the 85th birthday of the inventor of **BAMTEC®** reinforcement technology, Dipl.-Ing. Dipl.-Kfm. Wilhelm Häussler.

We were also very pleased to welcome the Falcone family as a new **BAMTEC®** partner. In 2026, they will begin **BAMTEC®** production in their company Euro Construction Moderne Sarl, operating in Luxembourg and France. By supplying reinforcing steel including installation, they offer customers a strong value proposition.

We are already looking forward to next year's meeting.



Wilhelm Häussler at the **BAMTEC®** Partner Meeting



Nazio Falcone Jr., Nazio Falcone and Franz Häussler



Group photo of the **BAMTEC®** Partner Meeting 2025

BAMTEC® CONSULT



BAMTEC® redesign as a service for the construction company

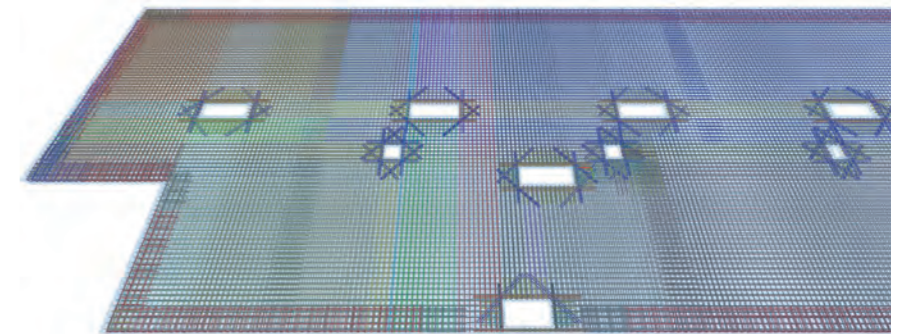
Typically, the structural engineering company is commissioned by the client at an early stage. At this point, the executing construction company has not yet been determined. As a result, coordination cannot yet take place, and it makes sense to design a conventional rebar solution.

Conventional solution as a starting point

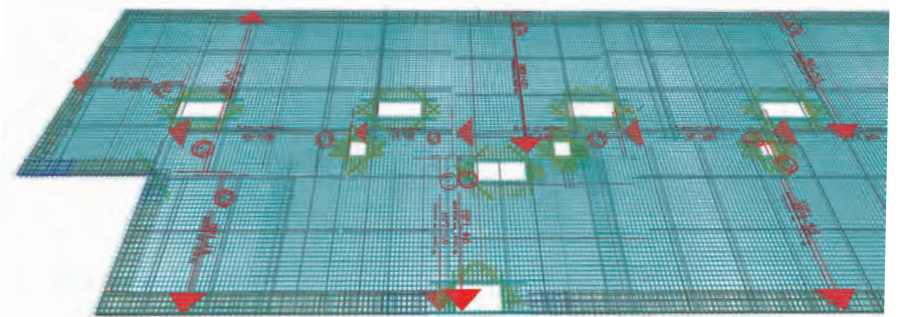
Once the execution planning has been completed and the contract awarded, a redesign to **BAMTEC®** can be proposed to the construction company responsible for the structural works.

When presenting the well-known advantages of **BAMTEC®** reinforcement technology in terms of construction time, quality, and cost, the engineer is supported by the BamCON software. A quick redesign is prepared on the basis of the already **BAMTEC®**-friendly 3D design within the BamCAD software (available as a free download at www.bamtec.com).

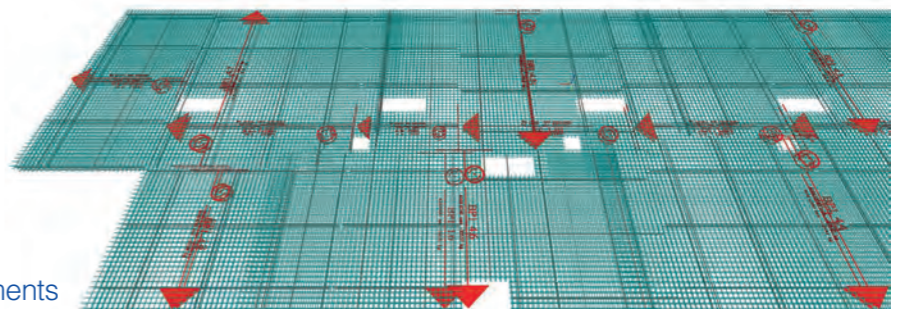
On the construction site, either the prepared **BAMTEC®** plans are used in combination with an additional reinforcement plan, or the **BAMTEC®** reinforcement is re-imported into CAD, making it possible to build directly with the model (BIM).



Floor slab in rebar as a **3D model**



BAMTEC® design of the lower and upper reinforcement layers



3D model including the **BAMTEC®** elements